

0.0

10.0

20.0

30.0

40.0

650837

27.7

27.65

5

20.1

20.92

1.0

650838

46.25

46.45

10

11.8

2.69

1.0

0.00, 11.28

CASING: Overburden / Casing

11.28, 84.00

BRECCIA CHL: Chlorite matrix breccia with 1cm to dm scale angular clasts. Clasts are primarily hematitic maroon siltstone and sandstone. Unit is very broken up and fractured with dm to 3m scale zones of fault gouge, fracture surfaces are commonly chl and carb altered and frequently rusty oxidized. Contains mm to dm scale unmineralized qtz carb. veins and stringers. Rarely contains cm scale hematite fracture fills. No elevated radioactivity or visible sulphides associated with this unit.

Total Depth = 291.21

Hole Number: OLY-07-01

AURORA

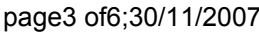
GEOSCIENCES

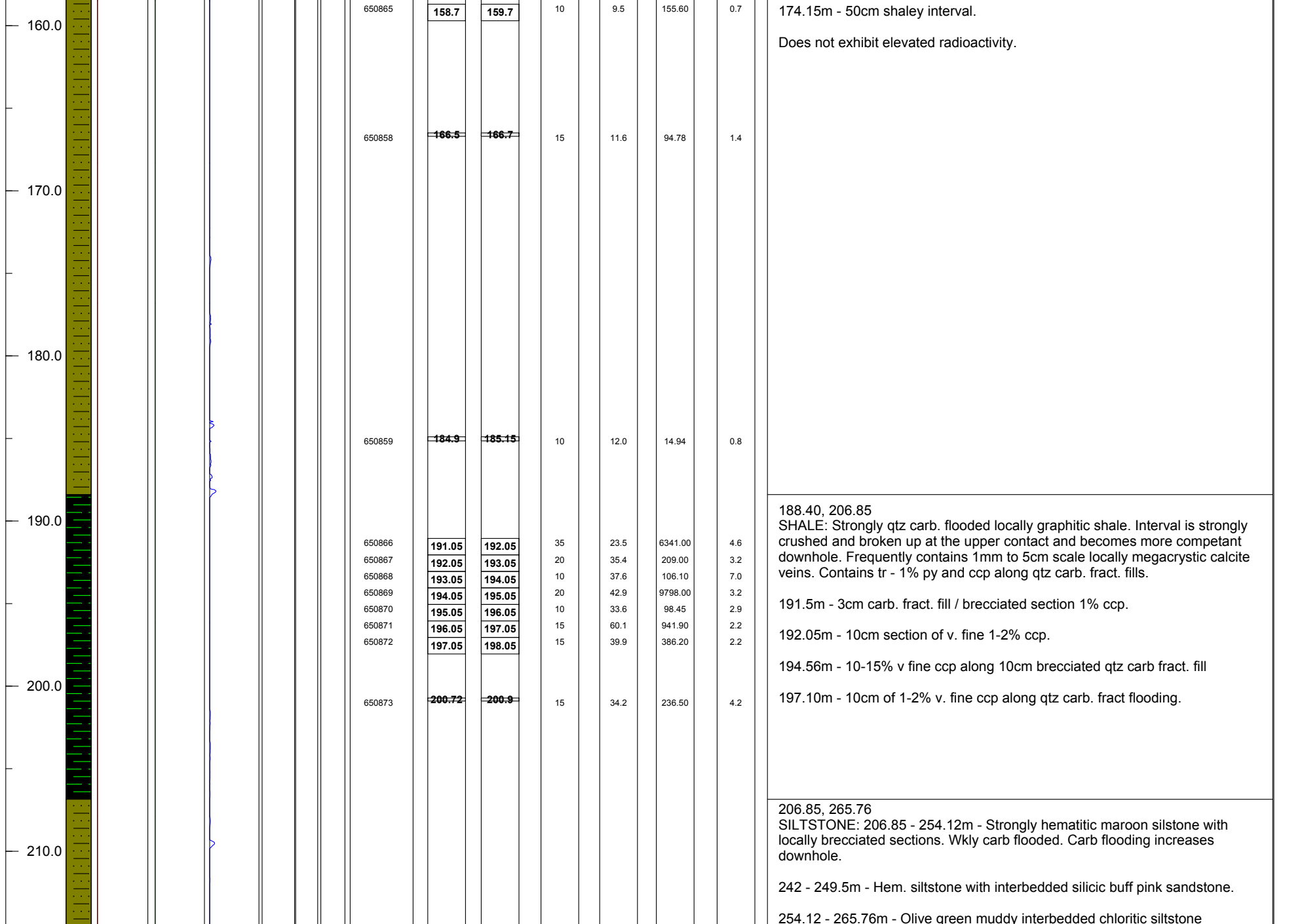
LTD

GEOLOGICAL RESEARCH SERVICES

page1 of6;30/11/2007

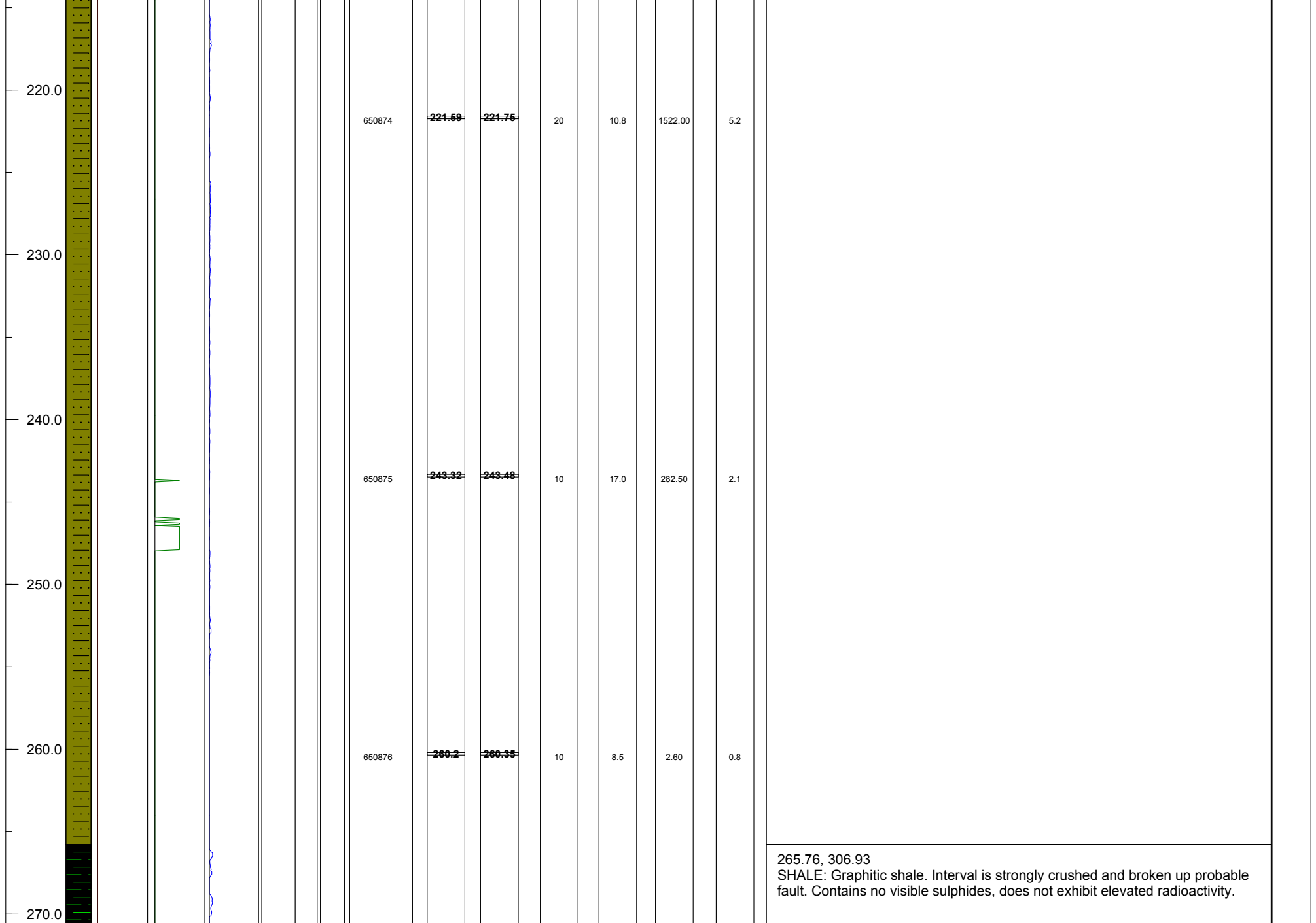
Total Depth = 291.21
Hole Number: OLY-07-01





Total Depth = 291.21
Hole Number: OLY-07-01





Total Depth = 291.21
Hole Number: OLY-07-01



